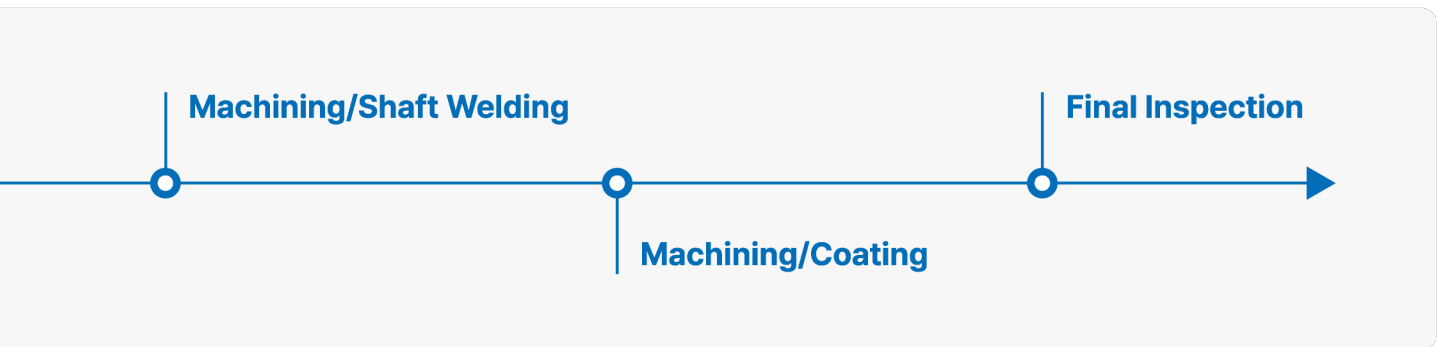
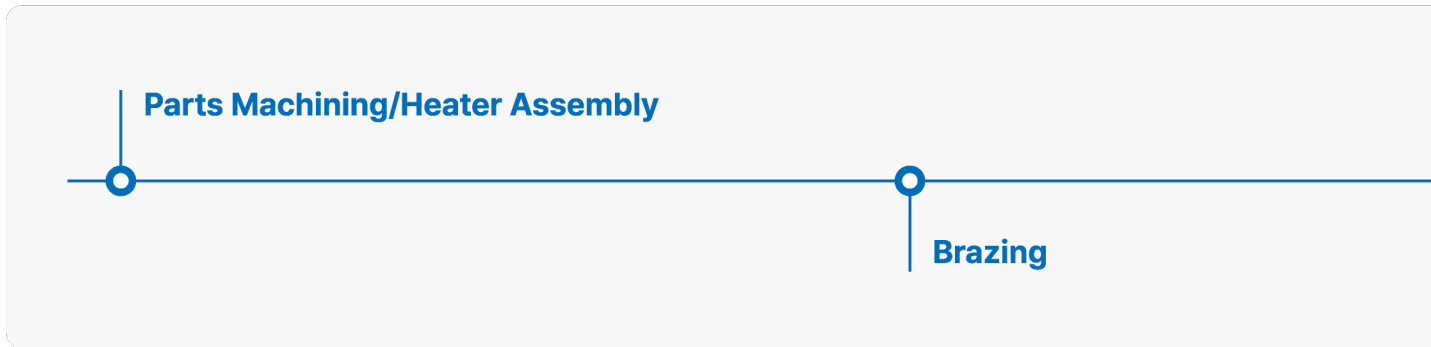


Metal Heater

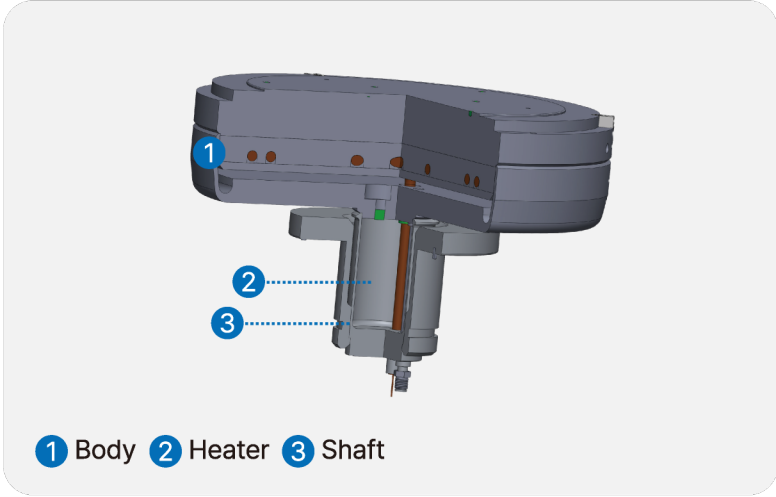
높은 열전도율로 빠르고 균일한 가열과 정밀 온도 조절이 가능합니다. 중-저온(0~450°C)의 다양한 막질 증착 등에 사용되며 우수한 내구성으로 빠른 온도 변화와 견고함이 요구되는 공정에 적합합니다.

Manufacturing Process Flow



Applications	CVD	PVD	Ashing
 Altus	 Vector		 Novellus Block

Manufacturing Specifications



Sizes

150mm, 200mm, 300mm

Coating

AlFx

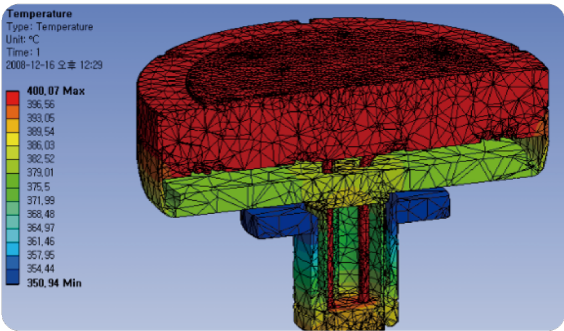
Materials

Aluminum

Temperature Uniformity

$\leq \pm 1\%$

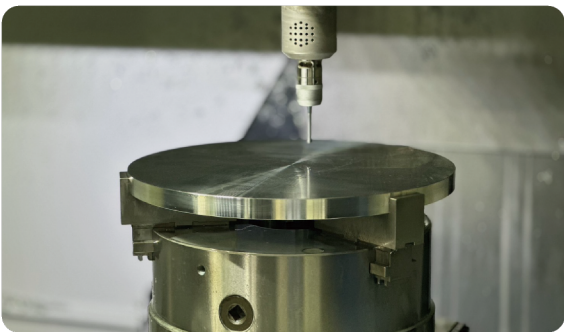
Design/Simulation



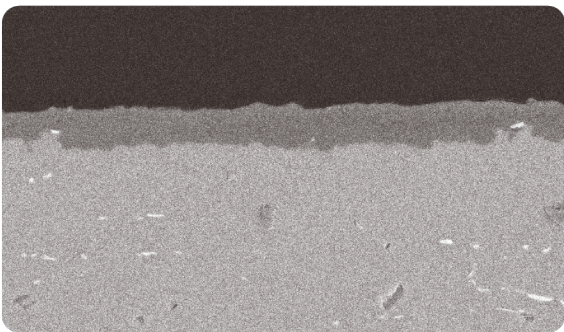
Brazing



Machining



Coating



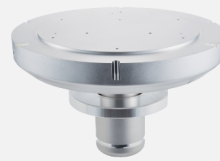
Metal Heater Product Line Up



Altus

Sizes: 200mm, 300mm

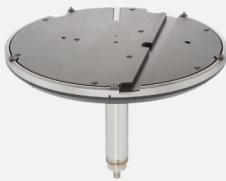
Variations: Brazing, Green, CR(Hole, Edge), VCO(Hole, Edge)



Vector

Sizes: 200mm, 300mm

Variations: Ball Type, Pin Type, Thin, Extreme



Load Lock Preheater

Sizes: 300mm

Variations: O-Ring, New Type(Guide Ring), Pin Type



HP + TxZ

Sizes: 200mm



Novellus Block

Sizes: 150mm, 200mm

Variations: Notch, Non-notch, Slit Lines, Pin Holes, Strap Holes



Mattson Block

Sizes: 150mm, 200mm

Variations: A2, A3