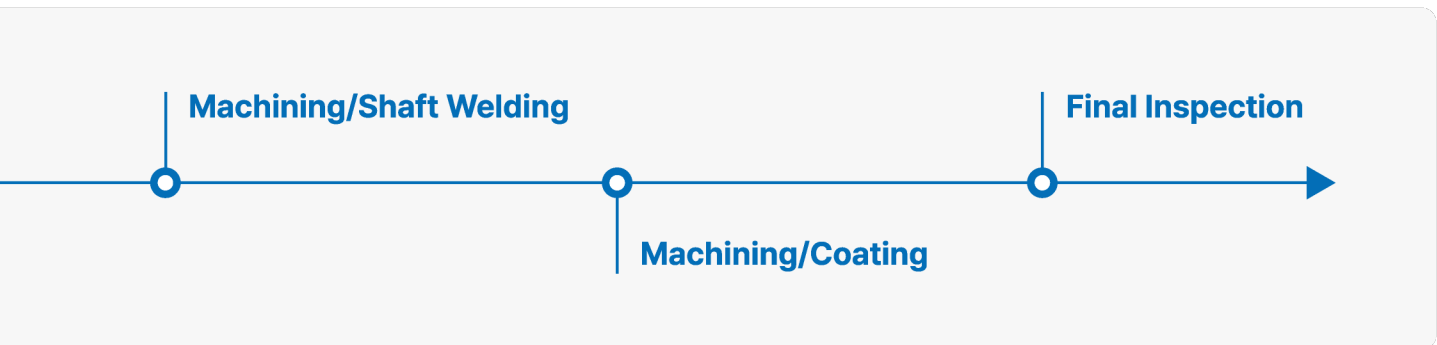
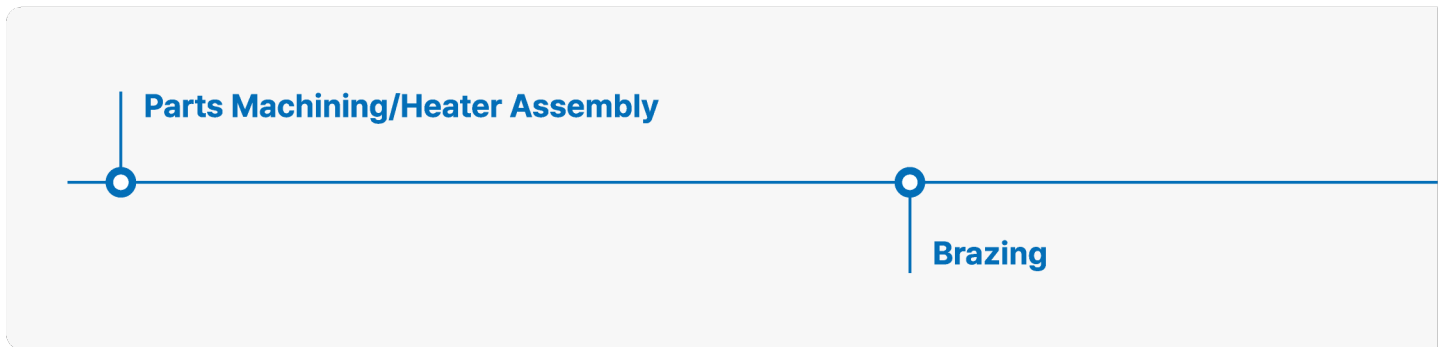


Metal Heater

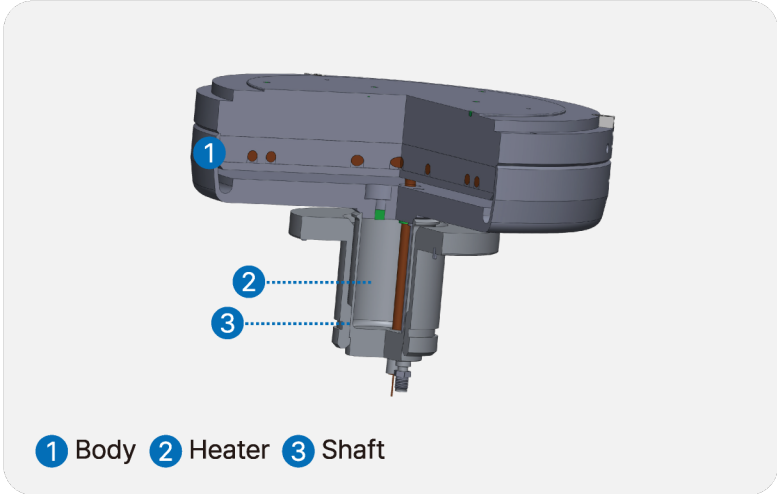
High thermal conductivity allows fast, uniform heating and precise temperature control, making Metal Heaters ideal for processes at medium to low temperatures(0~450°C).

Manufacturing Process Flow



Applications	CVD	PVD	Ashing
 Altus	 Vector		 Novellus Block

Manufacturing Specifications



Sizes

150mm, 200mm, 300mm

Coating

AlFx

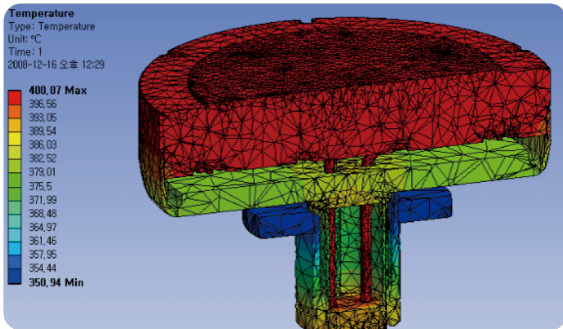
Materials

Aluminum

Temperature Uniformity

≤±1%

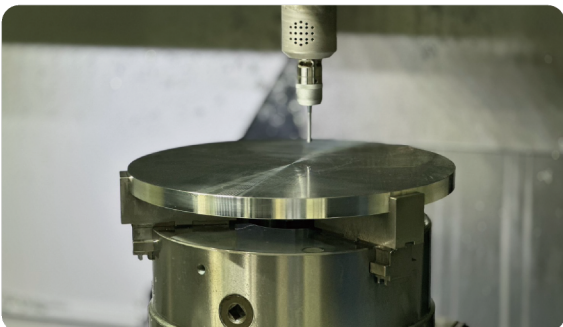
Design/Simulation



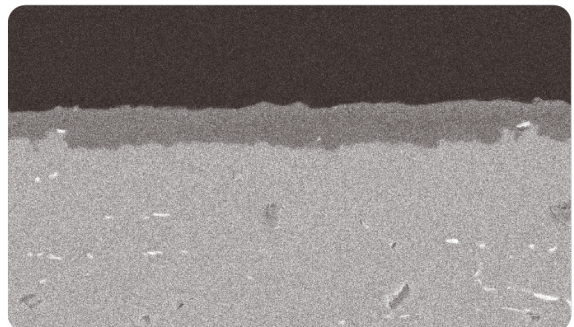
Brazing



Machining



Coating



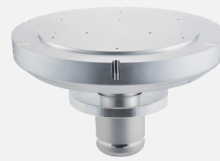
Metal Heater Product Line Up



Altus

Sizes: 200mm, 300mm

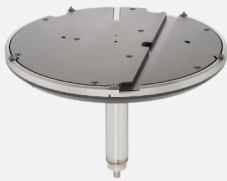
Variations: Brazing, Green, CR(Hole, Edge), VCO(Hole, Edge)



Vector

Sizes: 200mm, 300mm

Variations: Ball Type, Pin Type, Thin, Extreme



Load Lock Preheater

Sizes: 300mm

Variations: O-Ring, New Type(Guide Ring), Pin Type



HP + TxZ

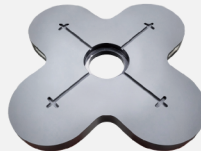
Sizes: 200mm



Novellus Block

Sizes: 150mm, 200mm

Variations: Notch, Non-notch, Slit Lines, Pin Holes, Strap Holes



Mattson Block

Sizes: 150mm, 200mm

Variations: A2, A3